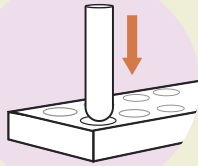


BEFORE

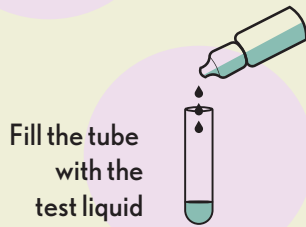


Blow your nose
and wash your hands
with soap

1 SET UP

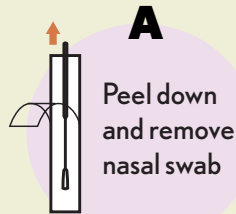


Place the tube
in the holder

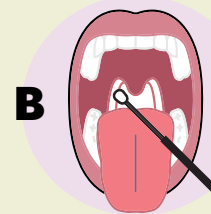


Fill the tube
with the
test liquid

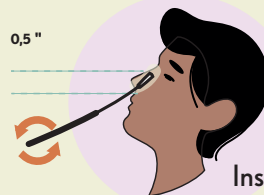
2 COLLECTION



A
Peel down
and remove
nasal swab



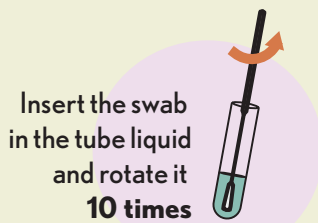
B
Insert swab to
reach back
of throat



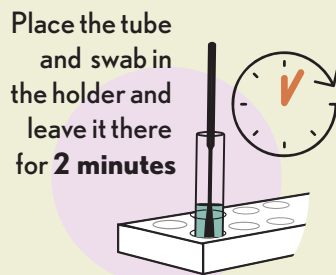
0.5"

Insert nasal swab **1/2 inch** from edge of nostril.
Roll **5 times** in each nostril and keep the nasal
swab in place for **10 seconds** (left & right).

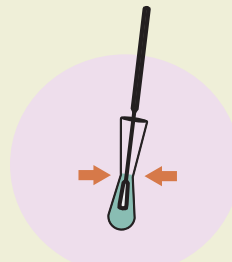
3 PREPARATION



Insert the swab
in the tube liquid
and rotate it
10 times



Place the tube
and swab in
the holder and
leave it there
for **2 minutes**

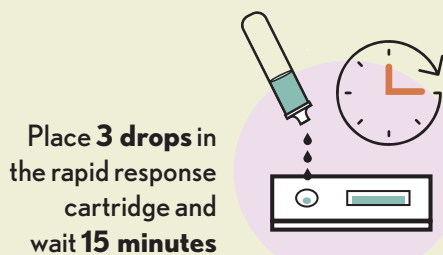


Remove the
swab by pinching
the tube



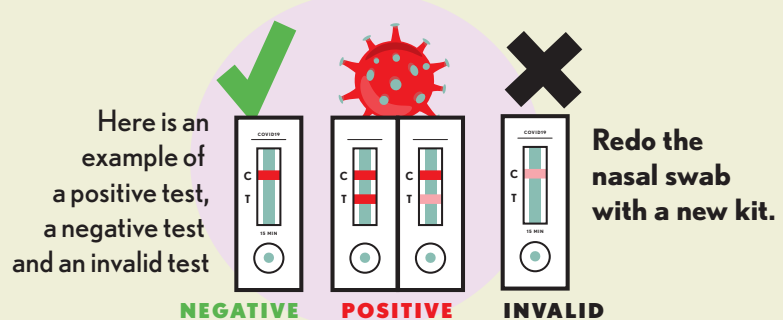
Close the
tube with
the stopper cap

4 TESTING



Place **3 drops**
in the rapid response
cartridge and
wait **15 minutes**

(Do not touch it during
the waiting time)



Here is an
example of
a positive test,
a negative test
and an invalid test

NEGATIVE **POSITIVE** **INVALID**

Redo the
nasal swab
with a new kit.

* If your rapid test is **NEGATIVE**,
you must **do a second test**
48 hours later

🦠 If you are **POSITIVE**, please
call the **Info-Covid line:**
1-888-662-7482