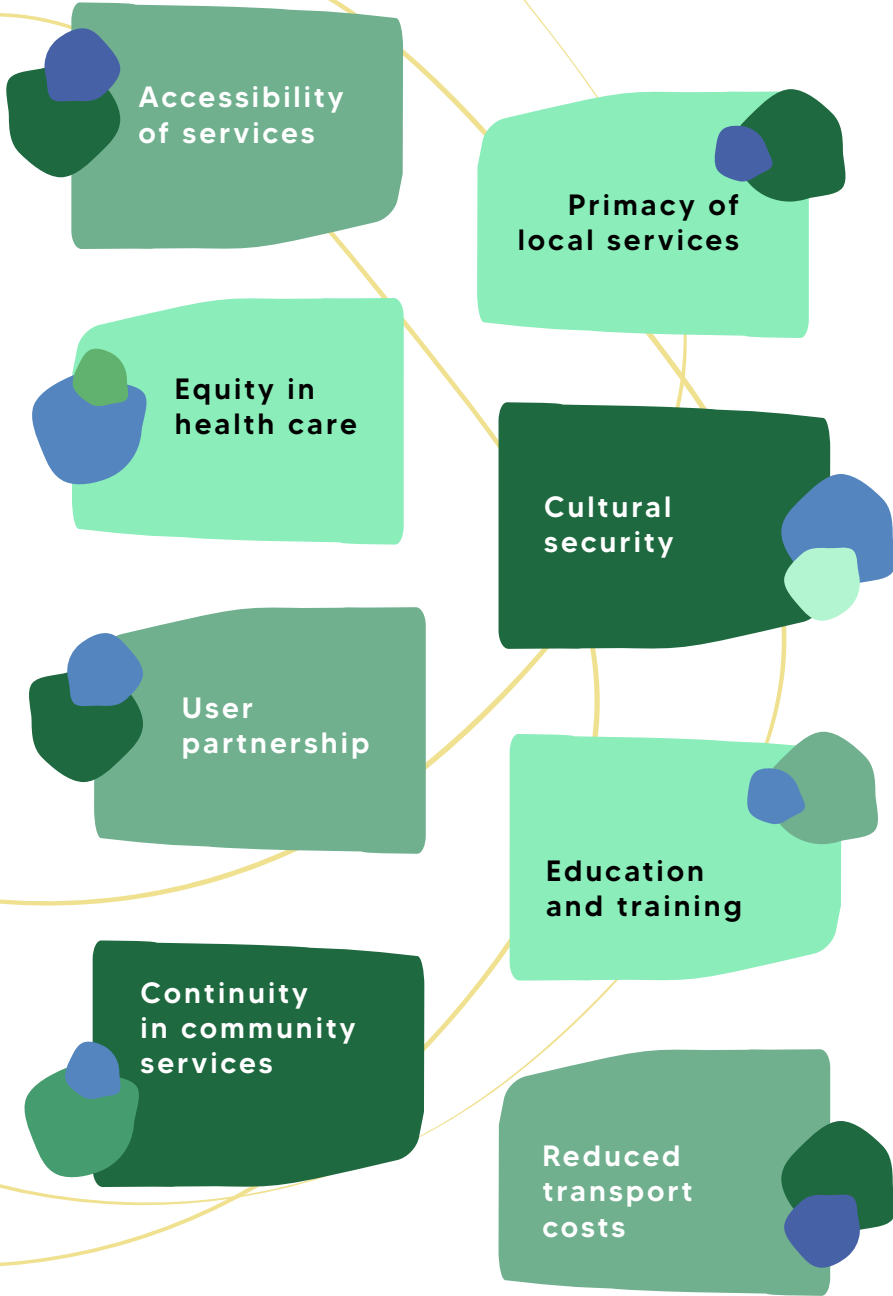


# Executive summary

Nunavik  
Regional  
Hospital  
Center  
Clinical  
Plan



# GUIDING PRINCIPLES



# ORGANIZATION OF CLINICAL SERVICES

## PREHOSPITAL SERVICES



- Regional call management center to assess, sort and distribute calls
- Computerization of intervention reports
- Paramedical ambulance technicians will be integrated into more populous communities

## QANUIGNISIARVIK



- Front line services
- General and community services
- Services related to the childhood, youth and family program
- Psychosocial services
- Service model already well established in the fourteen (14) communities of Nunavik

## EMERGENCY



7

- Reception of patients from all communities requiring medical care involving the use of its technical facilities and or its specialized medicine service offer
- Services provided in a place suitable for optimal care, provided with equipment and infrastructure meeting the standards of an emergency hospital service
- Cubicles offering confidentiality, soundproofing and compliance with PCI standards
- Reception of patients where triage can be done according to current standards
- The local population will be able to be referred to the Qanuignisiarvik as needed
- Sharing of intervention rooms between emergency and Qanuignisiarvik



NBR OF STRETCHER(S)

# IN-PATIENT (CLIENTELES)



47  52  
2028 2038

## Unstable patients

### In medicine and surgery

- Short-term care unit including accommodation, care, treatment, diagnosis and rehabilitation

### With functional rehabilitation needs

- Functional rehabilitation program aimed at restoring functional independence and reducing the incidence of chronic disability

### In geriatric

### In pediatric

### In active and end-of-life palliative care

### In mental health and addiction

- Well-being Unit in separate sections, adult psychiatry, child psychiatry and addiction
- Take into account people with intellectual disability, with spectrum disorder and/or physical disabilities with concurrent problems
- Interdisciplinary team in mental health and addiction

### In psychiatric care

- Two mental health units, one for adults and one for children and young people
- These units will have isolation rooms designed according to best practices
- To these two units will be added a brief intervention unit



10  
Adult psychiatry



2  
Child psychiatry



4  
Brief intervention unit

### In addictions

- Safe unit for addiction
- Detoxication and withdrawal service under medical supervision accompanied by psychosocial support
- Interdisciplinary team made up of different health professionals who will respond to detoxication and withdrawal care in addition to the complex needs of people with concurrent problems.
- Safe place

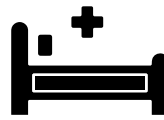


4



NBR OF BED(s)

## SURGERY SERVICES



2 2028  
3 2038

- The development of a functional, versatile operating room that meets standards will allow the development of a surgical service offer in Nunavik
- Versatile surgical rooms large enough to meet the needs anticipated by technological change
- Versatile surgical rooms large enough to meet the needs anticipated by technological change
- Day surgery services
- Surgery service for emergency obstetric interventions and thus avoid travel to the south
- Complex or specialized surgeries will continue to be offered through the MUHC service corridor

## SPECIALIZED OUTPATIENT SERVICES



### Outpatient clinic

- Centralization in one place of outpatient or telehealth consultation activities for professionals, general practitioners and medical specialists

### Ambulatory clinic

- Will welcome patients requiring short-term diagnostic and therapeutic management in addition to providing acute care services for day interventions
- Coordination, during the same stay, of consultations and interventions that can be carried out externally and of maintaining externally users who would otherwise have been hospitalized

### Dialysis clinic

- Integration of appropriate spaces for future dialysis needs

### Oncology clinic

- Integration of appropriate spaces for future chemotherapy needs

### Outpatient Psychiatry Clinic

- Outpatient clinic services
- For clients requiring post-hospital follow-up and staying in a transitional lodging resource before returning to their community
- For clients who need an outpatient consultation and who will come from the community where the Nunavik regional Hospital is located
- For clients from other communities who need a consultation without hospitalization, and who will be accommodated in a transit (Hospital Hotel)
- Support from the interdisciplinary team of the Well-being Unit

### Outpatient Addiction Clinic

- Clients requesting outpatient services will be followed-up in the Outpatient Addiction Clinic by the interdisciplinary team of the Wellbeing Unit
- Services would be provided to users living in the community where the Regional Hospital is located or would be made available to users coming from other communities in Nunavik. In the latter case, the persons would stay in the transitional accommodation resource

### Chronic diseases clinic

- Location of the program in chronic physical diseases
- Integrate with the outpatient clinic unit to simplify coordination between the first line and specialized services



NBR OF BED(s)

## MENTAL HEALTH DAY CENTER



- Within the Wellbeing Unit, a Day Centre will be available for hospitalized mental health clients, it will also be available for clients housed in the Transitional Housing Resource and for ambulatory clients in the Nunavik Hospital Centre's community

- Individual and group activities will be organized to promote the recovery and return of individuals to their communities

## MATERNAL, CHILD AND FAMILY HEALTH



### Mother-child service

- Physically attached to the Nunavik Regional Hospital Center while keeping its own identity
- Perinatal and early childhood center associated with and integrated into the birthing center building
- Corridor of services with the McGill University Health Center maintained for follow-ups that require it or for women who wish to give birth outside the territory

### Sexual health & family planning service

- Specialized consultation services in gynecology, emergency hospitalizations related to this problem as well as scheduled hospitalizations for gynecological surgery

## DIAGNOSTIC SERVICES



### Medical imaging

- X ray
- Ultrasound
- Diagnostic electrophysiology

### Laboratory

- Full-service routine and specialized diagnostic analysis services
- Maintenance of the corridor of services with the MUHC

## PHYSICAL REHABILITATION SERVICES



- Range of specialized services for adults and seniors in functional rehabilitation
- Adapted, functional and dedicated occupational therapy and physiotherapy rooms
- Orthosis, prosthesis and mechanical services (design, repair and storage)

## RESPIRATORY THERAPY CLINIC



— Function test and respiratory rehabilitation

## DENTAL CARE CLINIC



— Same current service organization, but increasing the available physical space

## PHARMACY SERVICES



### In-patient

- Enhancement of technologies
- Recovery of information and communication technologies

### Community

- Regional autonomy in the organization and delivery of pharmaceutical care and services to outpatients

## SUPPORT SERVICE ORGANIZATIONS

## MANAGEMENT OF THE ESTABLISHMENT



— Ensure a continuity with the twinning of the managers of a same department to ensure the continuity in the decision taken



## INFRASTRUCTURE AND TECHNICAL SERVICES

- Multidisciplinarity
- Bring the M<sup>2</sup>surface/worker back to a level similar to the other southern hospital level



## INFORMATION TECHNOLOGY

- Technology optimization
- Increase of the IT human resources
- Improved bandwidth



## ARCHIVES

- Medical electronic file



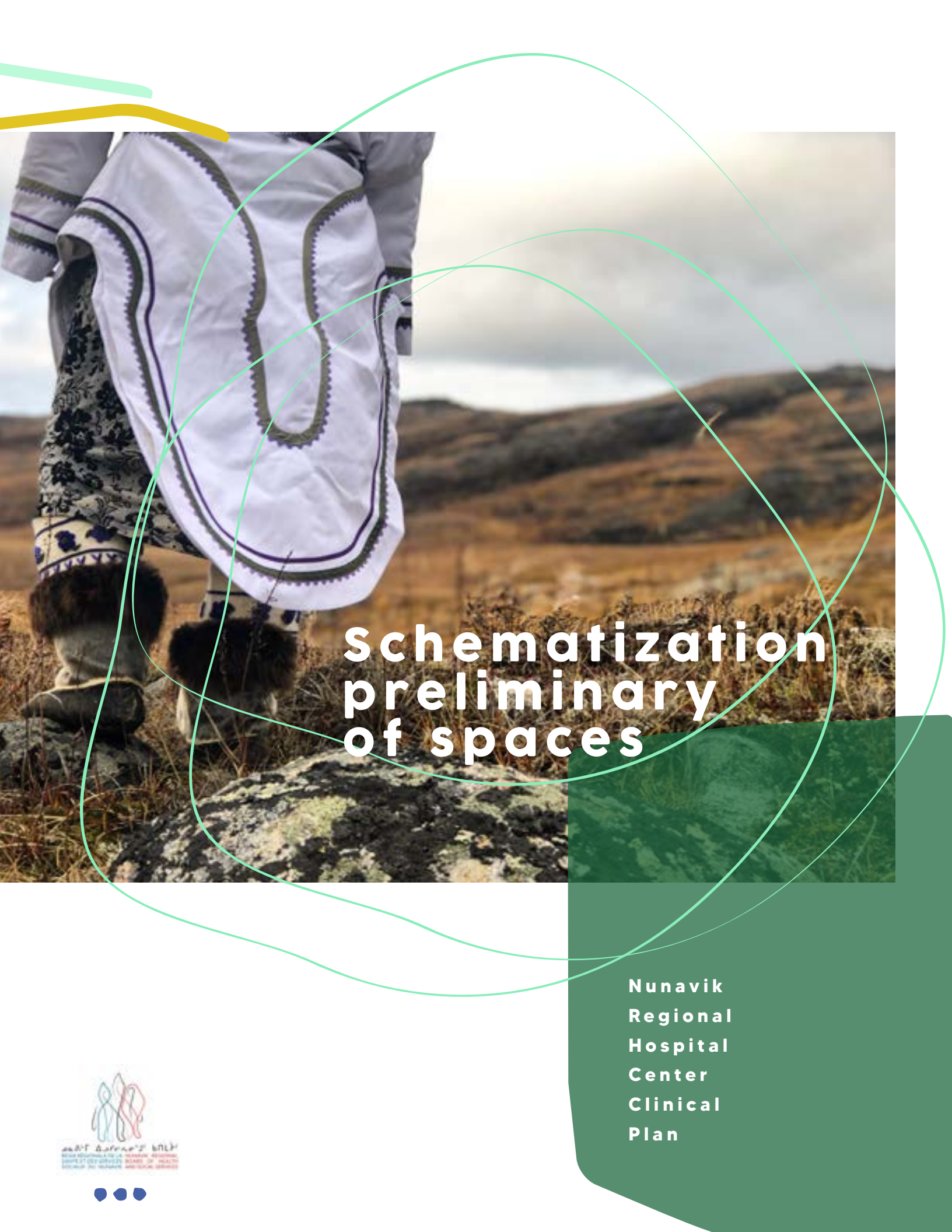
## HUMAN, MATERIAL AND FIX ASSET RESOURCES



## TEACHING AND RESEARCH ACTIVITY

- Setting up the clinic training for Inuit workers
- Classrooms for « adapted theory » teaching twinned with practice « on work site » training





# Schematization preliminary of spaces

Nunavik  
Regional  
Hospital  
Center  
Clinical  
Plan

